

## DAILY REPORT #13 – DORIS NORTH INFRASTRUCTURE/ NORTH DAM

Prepared by:	John Kurylo/ Jeff Orr	Date:	2012.01.18
Reviewed by:		Project #:	1CH008.058.0320
Role	Company	Personnel – Position	On Site
Client	Hope Bay Mining Limited (HBML)	Angela Holzapfel – ESR Compliance Manager David Vokey – ESR Coordinator Don Ethelston – HSLP Advisor Dean Wold - Safety Jill Turk – ESR Coordinator Katsky Venter – ESR Manger Michelle Tanquay – ESR Site Manager Stirling Kelly – HSLP Advisor	No Yes No No No No Yes Yes
	JDS	Lloyd Jackson – Mechanical Superintendent Sven Archimowtiz – Electrical Superintendent Doug Fielding – Construction Manager Ishan Fechter – Construction Coordinator Jerry Graham – Construction Manager Kevin Whieldon – Project Coordinator Mark Valeriote – Construction Manager	Yes Yes No Yes Yes No No
Engineering Design Consultants	SRK Consulting (Canada) Inc.	John Kurylo – Site Engineer Megan Miller – Site Engineer Lawrence Borowski – Site Engineer Murry McGregor – Site Engineer Lowell Wade – Senior Engineer	Yes No No No No
	EBA Engineering Consultants Ltd.	Jeff Orr – Project Manager Jennifer Stirling – Geologist Thomas Bradshaw – Junior Engineer	Yes No No
Earthworks Contractor	Nuna Logistics	Bradford Watkin – QC Manager Dale Craig – Safety Don Webber – Foreman Doug Haverland – Area Superintendent Gary Sodhi – Field Engineer Georges Cornelissen – Survey Manager Jeff Roberts - Surveyor Jim Cardinal – Foreman Kevin Oakes – Project Engineer Kevin Kozdrowski – Foreman Margret Caley – Surveyor Matt McKay – Civil Supervisor Mike MacMaster – Surveyor Mike Price – Field Engineer Nick Stoneberger – Superintendent Rick Peters – Foreman Ron MacMaster – Surveyor Simon Chipper – Civil Supervisor	Out No No No Yes No Yes No Out Out No Yes Yes No Yes Yes Yes Yes Out
External Distribution List:	SRK: Maritz Rykaart, Lowell Wade, Iozsef Miskolczi, Seema Kang, Silkie Wong EBA: Robert Zschuppe Nuna: Chris Petrovic JDS: Bob Prince-Wright HBML: Dave Power, Gerry Benson		
This Construction Daily Report is produced as an internal communication document between SRK site and head office staff. Any distribution of this report outside of SRK is done as a courtesy, and the information contained in this report are for information only to those external parties.			

**WEATHER (ROBERTS BAY)**

<http://www.wunderground.com/weatherstation/WXDailyHistory.asp?ID=INUNAVUT3>

Temperature/Wind Chill (°C)	6AM:-23.1/-38.8	12PM:-27.0/-41.8	6 PM -31.2/-44.9	12 AM:-31.7/-40.9
Precipitation (mm)	<b>Rain:</b> None		<b>Snow:</b> None	
Conditions	<b>Day Shift:</b> Moderate visibility, Moderate winds		<b>Night Shift:</b> Partly cloudy, moderate winds	
Daily norms (°C)	24 hour high: -21.8		24 hour low: -32.4	

**HEALTH, SAFETY AND ENVIRONMENT**

- No incidents were reported.
- At the start of day shift 'white out' conditions were in effect.
- Around 10:15 'white out' conditions reduced to a 'Level One' (low risk activities only).
- Around 11:30 all construction activities were allowed to resume (i.e. weather warning lifted).
- A fox was observed WSW of the Vent Raise pad (headed ~SW).

**COMMENTS, CORRESPONDENCE AND ACTIVITIES****DAILY MEETING WITH NUNA AND HBML TEAM:**

- The daily meet was attended by ADCO, ACI, Williams Wireless, Nuna [Nick Stoneberger, Kevin Oakes, Bradford Watkin], Newmont Safety [Stirling Kelly], JDS [Jerry Graham, Ishan Fechter, Lloyd Jackson], SRK [John Kurylo], EBA [Jeff Orr].

Topic	Status
Health and Safety and Environment	<ul style="list-style-type: none"> <li>• Weather is not looking good. Visibility is poor. A 'white out' was in effect in the morning. Work outside is not to result until safety has given the all clear.</li> <li>•</li> </ul>
North Dam	<ul style="list-style-type: none"> <li>• Clearing and ripping is planned to occur work is allowed to resume.</li> <li>• Placement is expected to result after clearing today, weather dependant.</li> </ul>
Water Management Structures	<ul style="list-style-type: none"> <li>• The snow road for the Diversion Berm is getting close to 50% completed.</li> <li>• Westarc is scheduled to come to site this Thursday (Jan 19<sup>th</sup>).</li> <li>• Potential drilling and blasting of sections of the Doris North Diversion Berm was discussed.</li> <li>• Survey has picked up the limits/ boundary of a bedrock outcrop noted along the more eastern section of the alignment.</li> </ul>
General	<ul style="list-style-type: none"> <li>• JDS informed Nuna/ SRK that the approval has been given to proceed with the construction of the road buttress on a section of the Secondary Road, near the vent raise pad area.</li> <li>• The generators are down at the batch plant, Nuna to follow-up.</li> </ul>

**SURVEY:**

<b>Required</b>	•
<b>Data Received</b>	•
<b>Outstanding</b>	• Survey data from as-built pick-up for FCM placed on 2012/01/17
<b>Upcoming</b>	<ul style="list-style-type: none"> <li>• Survey of frozen core surface after cleaning/ scraping activities at N. Dam (on going).</li> <li>• Survey of FCM after placement (on going).</li> </ul>

**NORTH DAM/FROZEN CORE PLANT PAD:****Frozen Core Plant**

- Material production at the frozen core plant was started around 16:30. Consistency of material was posing problems due to frozen lumps in the feed stock at the plant. Moisture contents were variable due to the inconsistent feed.
  - Had to stop around 17:30 due to belt from hopper getting clogged up. When belt clogged feed became to wet. Some partial trucks sent to reject pile by plant operators at each stop/ start.
  - At 18:05 the plant stopped again due to issues with getting power to outside feed belt. An electrician is planned to visit the FCP plant to investigate this issue.
- The 345 DL excavator with toothed buckets worked on breaking up frozen clumps at the FCM stockpile, on the FCP Pad.
- In total 39 loader buckets were loaded into the FCP hopper during today's production.

**Dam Shell**

- No significant activity.

**Key Trench**

- One excavator (equipped with a finishing bucket) was used during dayshift to assist with final key trench cleaning and to removal of additional frozen 5/8" clear material.
  - Additional scraping of 5/8" material from ~ 1+17 to 1+38 resulted today.
- Nuna survey picked up and as-built of the lift placed on 2012/01/17.
- Dental cleaning resulted from ~ station 0+80 to 1+17 and was approved before placement.
  - Cleaning was completed with the use of the Bobcat (equipped with a brush) and the air blower/ compressor.
  - The areas where placement did not result today (approximately from 1+00 to 1+17) will require additional re-cleaning before placement.
- FCM placement resulted at the North Dam in the afternoon from station ~ 0+80 to 1+00.
  - Only 4 loads were placed at the dam (Sta. 0+80 to 0+100) due to problems with the feed belt from the hopper plugging up with frozen lumps and over loading.
  - A smooth drum compactor was used today. Note that the drum on the other vibratory compactor has now also been changed to a smooth drum.
- Figure 1 presents a progress figure and field notes for today's placement.

**Field Geotechnical Testing, Laboratory and Sampling**

- Reading were taken from thermistor strings:
  - ND-VTS-085-KT, and
  - ND-HTS-085-25.3
- Single bead #59 was installed in the downstream of the key trench around station 0+90. A summary for the single bead status as well as recent readings are provided in the tables below.

**SINGLE BEAD THERMISTOR STATUS**

Installed Today			Active			Destroyed / Abandoned		
ID	Station	US/DS/Center	ID	Station	US/DS/Center	ID	Station	US/DS/Center
59	0+90	D/S	36	0+92	D/S			
			53	0+85	Center			

**RECENT SINGLE BEAD MEASUREMENTS**

SingleBead No.	Temperature (°C)					Date Installed
	Jan 17 <sup>th</sup> at 11:45	Jan 18 <sup>th</sup> at 10:40	Jan 18 <sup>th</sup> at 16:00	Jan 18 <sup>th</sup> at 18:20	Jan 18 <sup>th</sup> at 18:30	
53	21.52	-4.86	-10.29	-11.24		2012/01/17
36		-17.99				2012/01/15
59					10.94	2012/01/17

- A summary of the material testing progress for 2012/01/16 is presented in the tables below.

**PARTICLE SIZE DISTRIBUTION SUMMARY**

Collected	Processed	Completed
HB-FCP-CORE-PSD3-QA-20110118	HB-FCP-CORE-PSD2-QA-20110117	

**MOISTURE CONTENT SUMMARY**

Collected	Processed	Completed
HB-FCP-CORE-MC6-QA-20110118	HB-FCP-CORE-MC3-QA-20110117 HB-FCP-CORE-MC4-QA-20110117 HB-FCP-CORE-MC5-QA-20110117	

**COMPACTION TESTING SUMMARY**

Number of Tests	Material	Tested By	Shift	Notes
2	2:3 FCM	JO	Day	All Passed

- Compaction/Saturation numbers were acceptable. Material was a little on the wet side, due to inconsistencies in FCP feed.

**DORIS NORTH CAMP:**

- The snow road around the Doris North Diversion Berm continues. Minor additional work was completed on the snow road.
- The alignment of the Doris North Diversion Berm was staked out.
- SRK did a preliminary as-built survey review to better assess the area where the bedrock outcrop was observed. This was done to get a handle of the extent and exact location where bedrock may be expected to be blasted. This preliminary field review/ notes are provided as Figure 2.

**GENERAL:**

- Flights to/ from resumed in the afternoon.



PHOTOS:



**Photo 1:** ~SWW view down key trench after ‘white out’ conditions were changed to Level 1 conditions in the am. Note the snow that has built up against the downstream bank of the key trench.



**Photo 3:** ~SE view from the FCM stockpile on the FCP Pad. Looking towards the Tail Lake Access Road (in the background). Note that this is the area that the Dozer was working on and the area where the loader has been loading the hopper from.



**Photo 2:** ~ ENE view of the Doris North Vent Raise.



**Photo 4:** View of large chunks of frozen material that have been dozed off the top of the FCM stockpile, on the FCP Pad. This picture was taken of the N side of the stockpile.



**Photo 5:** Close-up view of appearance of typical key trench base after most of 5/8" clear material has been removed, taken around station 1+00 before dental cleaning.





**Figure 6:** Progress photo of the North Dam construction from Photo Point 1; taken in the pm, ~ SE view.



**Figure 7:** Progress photo of the North Dam construction from Photo Point 2; taken in the am, ~ WNW view.





**Photo 8:** CAT 33 CL Excavator (equipped with finishing bucket) scraping down 5/8" material in the key trench. Note that the excavator is working around station 1+20 at the time this picture was taken.



**Photo 9:** Bobcat (equipped with brush) cleaning the central key trench area before placement, ~ NW view.



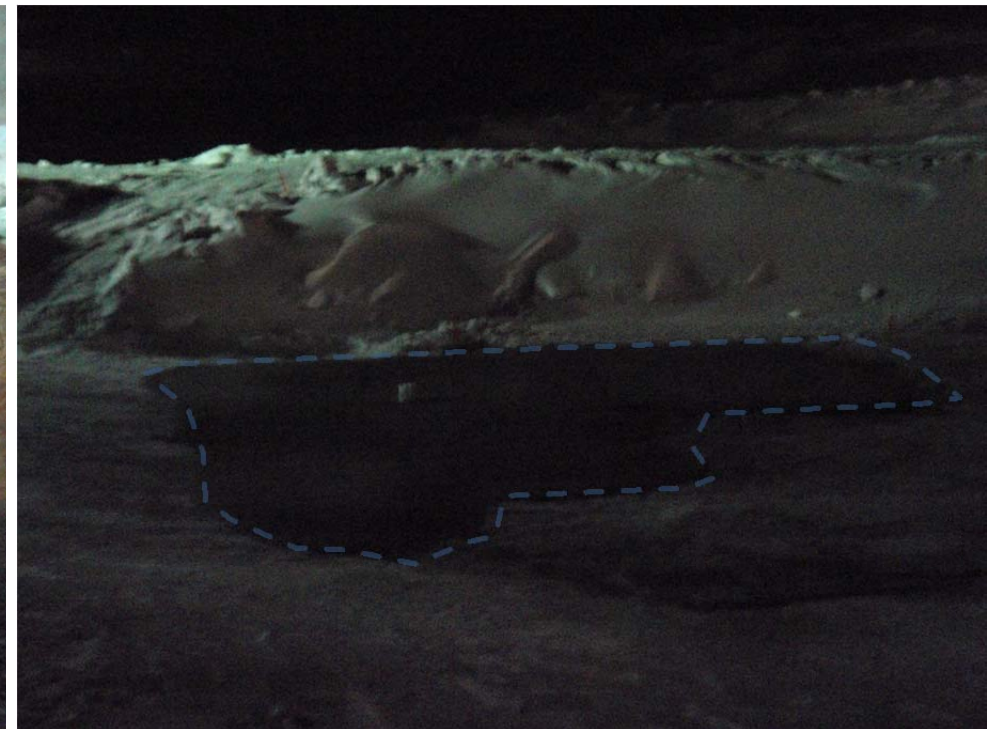
**Photo 10:** View of lift thickness placed today. Photo taken around station 0+85.



**Photo 11:** View of FCM exiting the chute at the FCP. Note that at the time this picture was taken a higher frequency of frozen clumps were being noted in the FCM. Shortly after this picture the FCP was temporary stopped while an overloaded belt, from the hopper, was fixed.



**Photo 12:** ~N view of FCM placement in the central key trench area.



**Photo 13:** Area where FCM was placed today, ~ NNW view. Note that the material placed today has been highlighted with the light blue dashed line.



FIGURES:

Figure 1 - Field notes/ progress figure for today's FCM placement (based on visual observation, i.e. as-built survey still to be picked up)

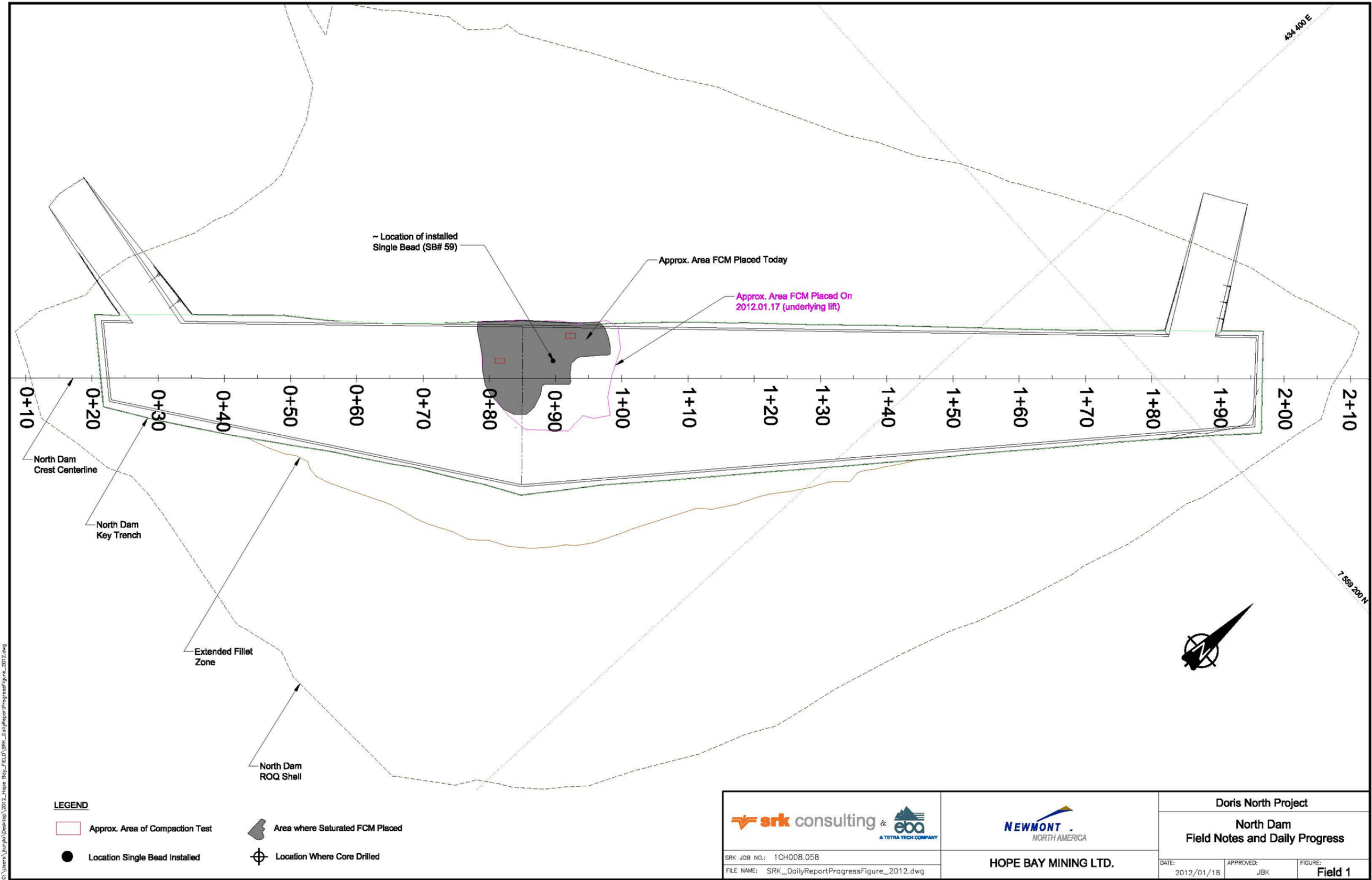
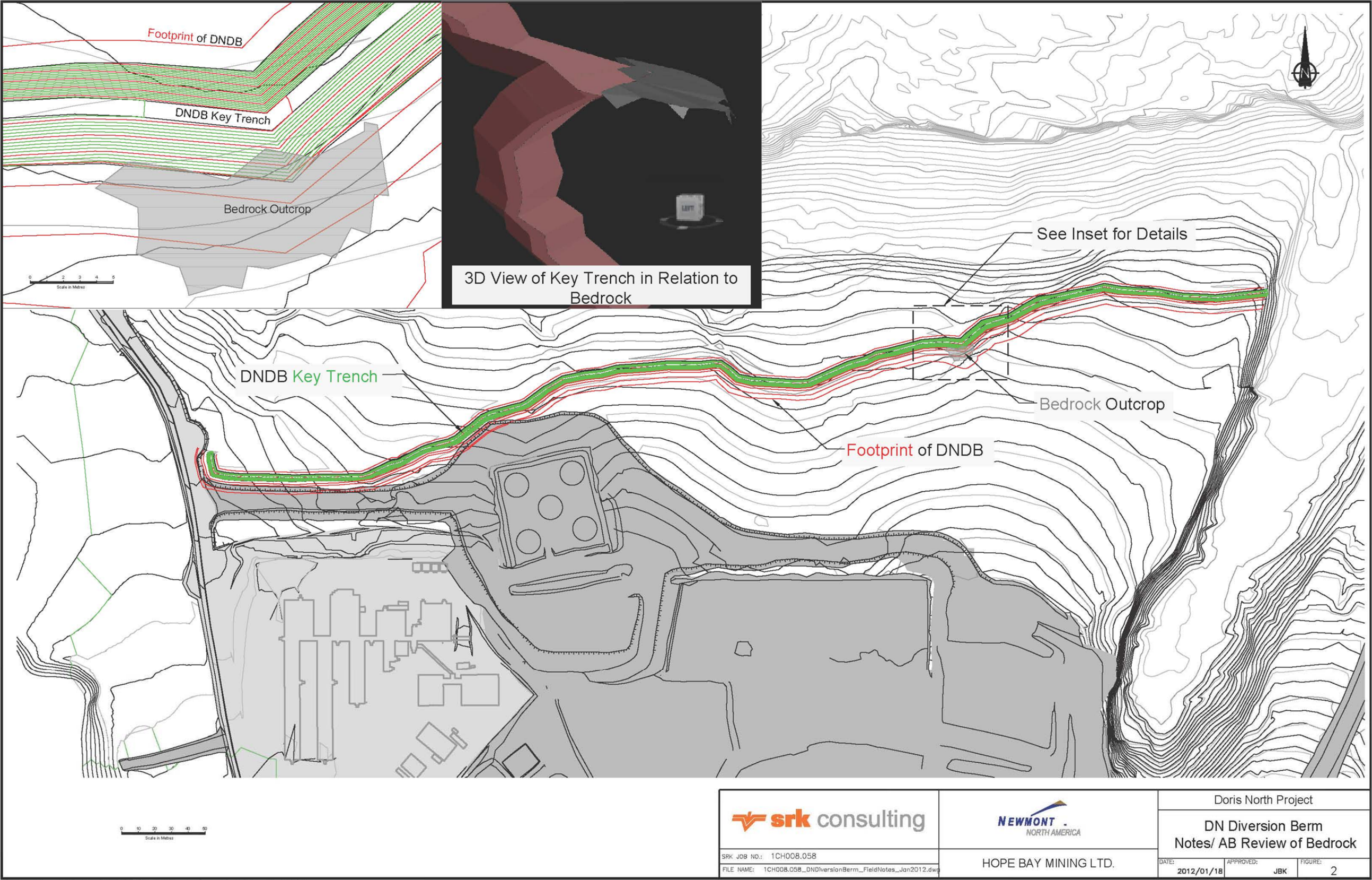




Figure 2 - SRK field notes on the location of the bedrock outcrop observed in the DN Diversion Berm footprint, based on as-built data.



C:\Users\jkurylo\Desktop\1CH008.058\_DNDiversionBerm\_FieldNotes\_Jan2012.dwg